

ICG **INDOFINE Chemical Company, Inc.**

121 Stryker Lane, Bldg. 30, Suite 1 • Hillsborough, NJ 08844 • U.S.A.

Phone: (908) 359-6778 • FAX: (908) 359-1179

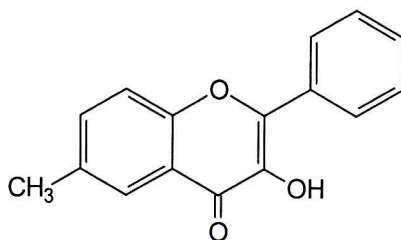
website: www.indofinechemical.com

e-mail: chemical@indofinechemical.com

CERTIFICATE OF ANALYSIS

Cat No.: M-407

<u>Product:</u>	3-HYDROXY-6-METHYLFLAVONE (6-Methylflavonol)
<u>Lot Number:</u>	99195
<u>Molecular Formula:</u>	C ₁₆ H ₁₂ O ₃
<u>Molecular Weight:</u>	252.27
<u>Melting Point:</u>	205-207°C
<u>Appearance:</u>	Pale yellow powder
<u>TLC:</u>	Hexane : Ethyl acetate (7:3)
<u>Solubility:</u>	Soluble in chloroform
<u>Assay(HPLC):</u>	99.87%





INDOFINE Chemical Company, Inc.

121 Stryker Lane, Bldg. 30, Suite 1 • Hillsborough, NJ 08844 • U.S.A.

Phone: (908) 359-6778 • FAX: (908) 359-1179

website: www.indofinechemical.com

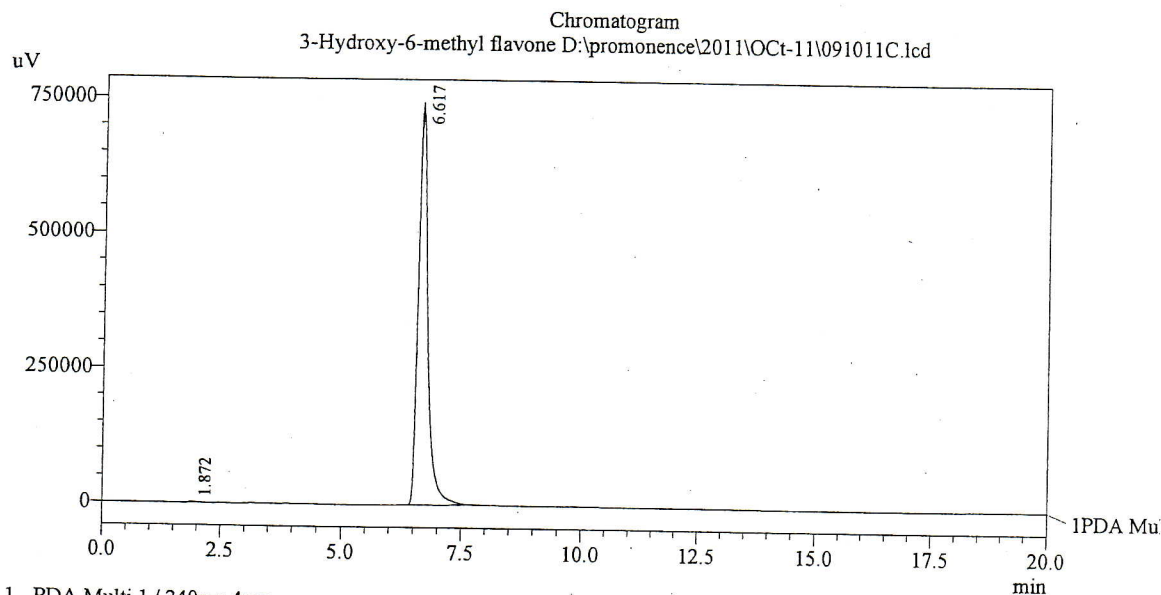
e-mail: chemical@indofinechemical.com

HPLC ANALYSIS

Date Acquired	: 10/9/2012 10:55:27 AM	Cat. No.:	M-407
Acquired by	: Rama krishna	Product name:	3-Hydroxy-6-methylflavone
Sample Name	: 3-Hydroxy-6-methyl flavone	Lot No.:	99195
Sample ID	: Lot No.: 99195		
Injection Volume	: 20 uL		
Data Filename	: 091011C.lcd		
Method Filename	: Linear Isocratic.M.lcm		

Description:

Column	: Phenomenex C-18, 250X4.6mm 5.0µm
Flow	: 1.000ML/min.
Mobile Phase	: A(20% of 0.05% TFA in water) B(80% of Acetonitrile)



PeakTable

PDA Ch1 240nm 4nm

Peak#	Ret. Time	Area	Height	Area %
1	1.872	12649	1639	0.123
2	6.617	10266062	744414	99.877
Total		10278711	746052	100.000